

# TruAbutment Digital Solutions

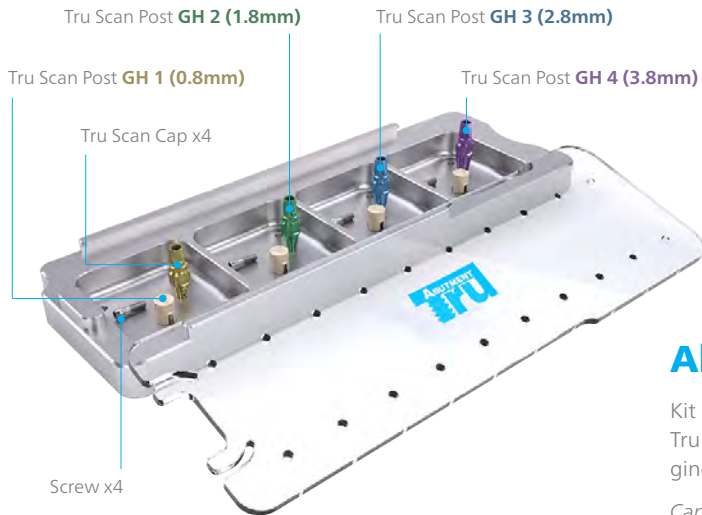
CEREC® Solution



TruAbutment Inc.  
17742 Cowan  
Irvine, CA 92614

cerec@truabutment.com  
T: 714.956.1488 | F: 714.956.1491  
truabutment.com

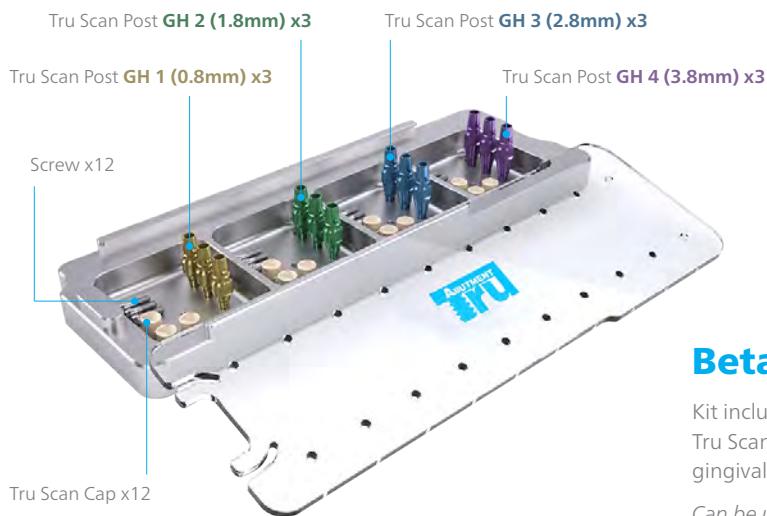
# Tru Scan Post *Kit*



## Alpha Kit | \$475

Kit includes 1 of each size Tru Scan Post, Tru Scan Body and screw for 4 different gingival heights with the autoclavable kit.

*Can be used for single-unit restorations.*



## Beta Kit | \$925

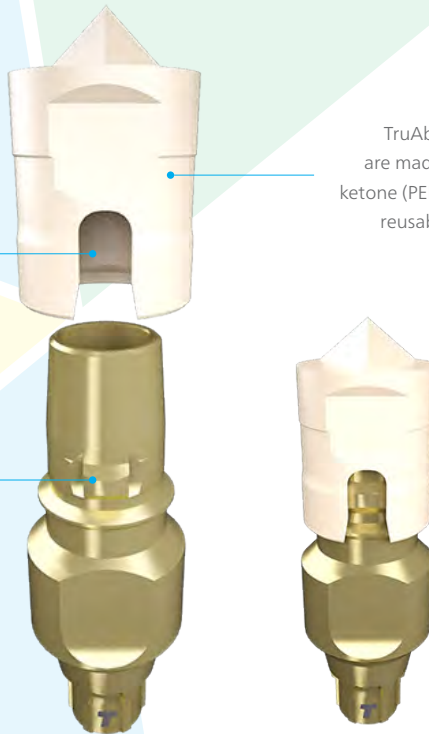
Kit includes 3 of each size Tru Scan Post, Tru Scan Body and screw for 4 different gingival heights with the autoclavable kit.

*Can be used for single and multi-unit restorations.*

**Tru Scan Post is available in 4 different sizes**, each color coded: **0.8mm, 1.8mm, 2.8mm, 3.8mm**. It is used for intraoral scanning in order to fabricate **Hybrid CAD/CAM Custom Abutments, Screw-retained crowns, and Full Titanium CAD/CAM Custom Abutments**.

Scan Body and Scan Post engages in only one direction and doesn't rotate after engaging. The flat side on both Scan Body and Scan Post are the reference points indicating the direction of engagement.

TruAbutment Scan Bodies are made from Polyether ether ketone (PEEK) material making them reusable and autoclavable.



## Tru Scan Post



**GH 1**  
0.8mm



**GH 2**  
1.8mm



**GH 3**  
2.8mm



**GH 4**  
3.8mm



**Ti-Base**  
Starting \$60



**Scan Post**  
Starting \$79/unit  
(includes Scan Body)



**Scan Body**  
\$75/pack of 5

*Tru Scan Post and Tru Scan Cap are autoclavable over 100+ uses (Pre-vacuum type at 132 degree for 4 mins.)*

# Screw-Retained Restoration

All TruAbutment CEREC Ti-Bases come with 4 different gingival height options.

These options give you the ability to avoid interference on lower height platforms and also the ability to extend the starting point of platform margins by raising the gingival height of the Ti-Base.

## When should we use different height ti-bases?

Gingival Space



The corresponding Scan Post should be used when using specific height ti-bases.

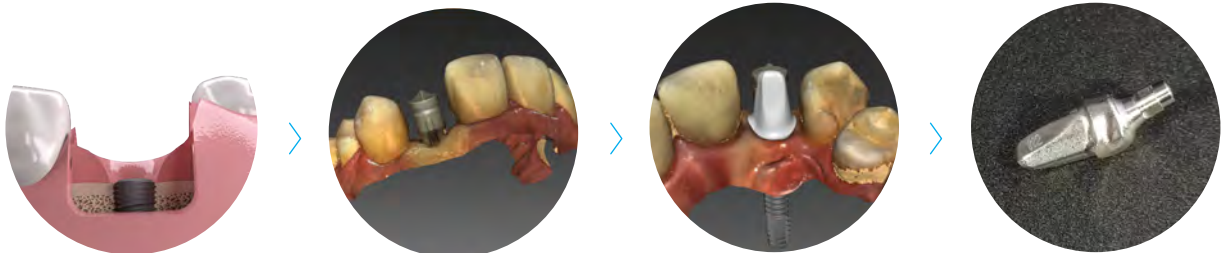
# Full Titanium <sup>CAD/CAM</sup> Custom Abutments

Not only does TruAbutment give you different height options on Ti-Bases, but it also gives CEREC and Inlab users the ability to receive a full titanium custom abutment from a CEREC or Inlab abutment design. You can use either a TruAbutment Scan Post/Ti-Base or Sirona Scan Post/Ti-Base to initially scan a case and receive a full titanium custom abutment from CEREC/Inlab design.



## Why is this an important option to have in a restoration?

When you are working with restricted space and having issues with minimum thickness or trying to correct a severe angulation on an implant, the option of completely ignoring minimum thickness and designing an abutment to be milled out in full titanium can be the exact solution you need.



Regardless of how much gingival space you have, you can use either the Sirona Scan Post or TruAbutment Scan Post GH1 to engage the implant and scan the case in.

When designing for a full titanium custom abutment, minimum thickness can be ignored as long as abutment design covers the ti-base and no visible holes are present on the abutment.

Manufacturer	Platform	Selection Library	TruAbutment SP			Sirona SP		Color Reference	Driver	Torque
			Tru Scan Post	Tru Ti-Base	Titanium Custom Abut.	Titanium Custom Abut.				
CamLog®	CONELOG 3.3/0.8	CONELOG 3.3/0.8				•		0.050" Hex 1.25mm	20N. Cm	
	CONELOG 3.3/2.0	CONELOG 3.3/2.0				•			20N. Cm	
	CONELOG 3.8/0.8	CONELOG 3.8/0.8				•			20N. Cm	
	CONELOG 3.8/2.0	CONELOG 3.8/2.0				•			20N. Cm	
	CONELOG 4.3/0.8	CONELOG 4.3/0.8				•			20N. Cm	
	CONELOG 4.3/2.0	CONELOG 4.3/2.0				•			20N. Cm	
	CONELOG 5.0/0.8	CONELOG 5.0/0.8				•			20N. Cm	
	CONELOG 5.0/2.0	CONELOG 5.0/2.0				•			20N. Cm	
	CamLog® 3.3	CamLog 3.3				•			20N. Cm	
	CamLog® 3.8	CamLog 3.8				•			20N. Cm	
	CamLog® 4.3	CamLog 4.3				•			20N. Cm	
	CamLog® 5.0	CamLog 5.0				•			20N. Cm	
CamLog® 6.0	CamLog 6.0				•		20N. Cm			
Dentis	s-Clean Regular	NB A 4.5 L	•	•	•			0.050" Hex 1.25mm	30N. Cm	
Dentium	SuperLine	NB A 4.5 L	•	•	•			0.050" Hex 1.25mm	30N. Cm	
Dentsply Sirona®	OsseoSpeed®/OsseoSpeed® TX 3.5, 4.0	AT OS 3.5/4.0 L	•	•	•	•	Aqua	0.050" Hex 1.25mm	20N. Cm	
	OsseoSpeed®/OsseoSpeed® TX 4.5, 5.0	AT OS 4.5/5.0 L	•	•	•	•	Lilac		25N. Cm	
	OsseoSpeed® EV 3.0	AT EV 3.0 GH1 S	•	•	•	•	Green		25N. Cm	
	OsseoSpeed® EV 3.6	AT EV 3.6 GH1 S	•	•	•	•	Purple		25N. Cm	
	OsseoSpeed® EV 4.2	AT EV 4.2 GH1 L	•	•	•	•	Yellow		25N. Cm	
	OsseoSpeed® EV 4.8	AT EV 4.8 GH1 L	•	•	•	•	Blue		25N. Cm	
	OsseoSpeed® EV 5.4	AT EV 5.4 GH1 L	•	•	•	•	Brown	25N. Cm		
	Friadent® Xive® 3.4	FX 3.4 S				•	Silver	0.048" Hex 1.2mm	24N. Cm	
	Friadent® Xive® 3.8	FX 3.8 S				•	Yellow		24N. Cm	
	Friadent® Xive® 4.5	FX 4.5 L				•	Blue		24N. Cm	
Friadent® Xive® 5.5	FX 5.5 L				•	Red	24N. Cm			
DIO	UF Regular	NB A 4.5 L	•	•	•			0.048" Hex 1.2mm	30N. Cm	
Hiossen (Osstem)	Hiossen ET Mini	CamLog 3.8	•	•	•			0.048" Hex 1.2mm	20N. Cm	
	Hiossen ET Regular Regular	NB A 4.5 L	•	•	•			30N. Cm		
Megagen	Anyone Regular	NB A 4.5 L	•	•	•			0.048" Hex 1.2mm	30N. Cm	
	Anyridge	NB A 4.5 L	•	•	•			30N. Cm		
Neobiotech	IS Regular	NB A 4.5 L	•	•	•			0.048" Hex 1.2mm	30N. Cm	

Manufacturer	Platform	Selection Library	TruAbutment SP			Sirona SP	Color Reference	Driver	Torque
			Tru Scan Post	Tru Ti-Base	Titanium Custom Abut.	Titanium Custom Abut.			
Nobel Biocare®	NobelActive™ NP 3.5	NB A 4.5 L	•	•	•	•	Purple	NobelBiocare Unigrip	35N. Cm
	NobelActive™ RP 4.3, 5.0	NB A 5.0 L	•	•	•	•	Yellow		35N. Cm
	NobelReplace™ NP 3.5	NB RS 3.5 L	Coming Soon						35N. Cm
	NobelReplace™ RP 4.3	NB RS 4.3 L	Coming Soon						35N. Cm
	NobelReplace™ WP 5.0	NB RS 5.0 L	Coming Soon						35N. Cm
	NobelReplace™ 6.0	NB RS 6.0 L	Coming Soon						35N. Cm
Straumann®	Bone Level 3.3 NC	S BL 3.3 L	•	•	•	•	Yellow	Straumann Torx	35N. Cm
	Bone Level 4.1, 4.8 RC	S BL 4.1 L	•	•	•	•	Red		35N. Cm
Zimmer® Dental	Tapered Screw-Vent™ 3.5	Z TSV 3.5 L	•	•	•	•	Green	0.050° Hex 1.25mm	30N. Cm
	Tapered Screw-Vent™ 4.5	Z TSV 4.5 L	•	•	•	•	Green		30N. Cm
	Tapered Screw-Vent™ 5.7	Z TSV 5.7 L	•	•	•	•	Green		30N. Cm
	Biomet 3i Certain™ 3.4	B C 3.4 S				•		0.048° Hex 1.2mm	20N. Cm
	Biomet 3i Certain™ 4.1	B C 4.1 L				•			20N. Cm
Biomet 3i Certain™ 5.0	B C 5.0 L				•		20N. Cm		

